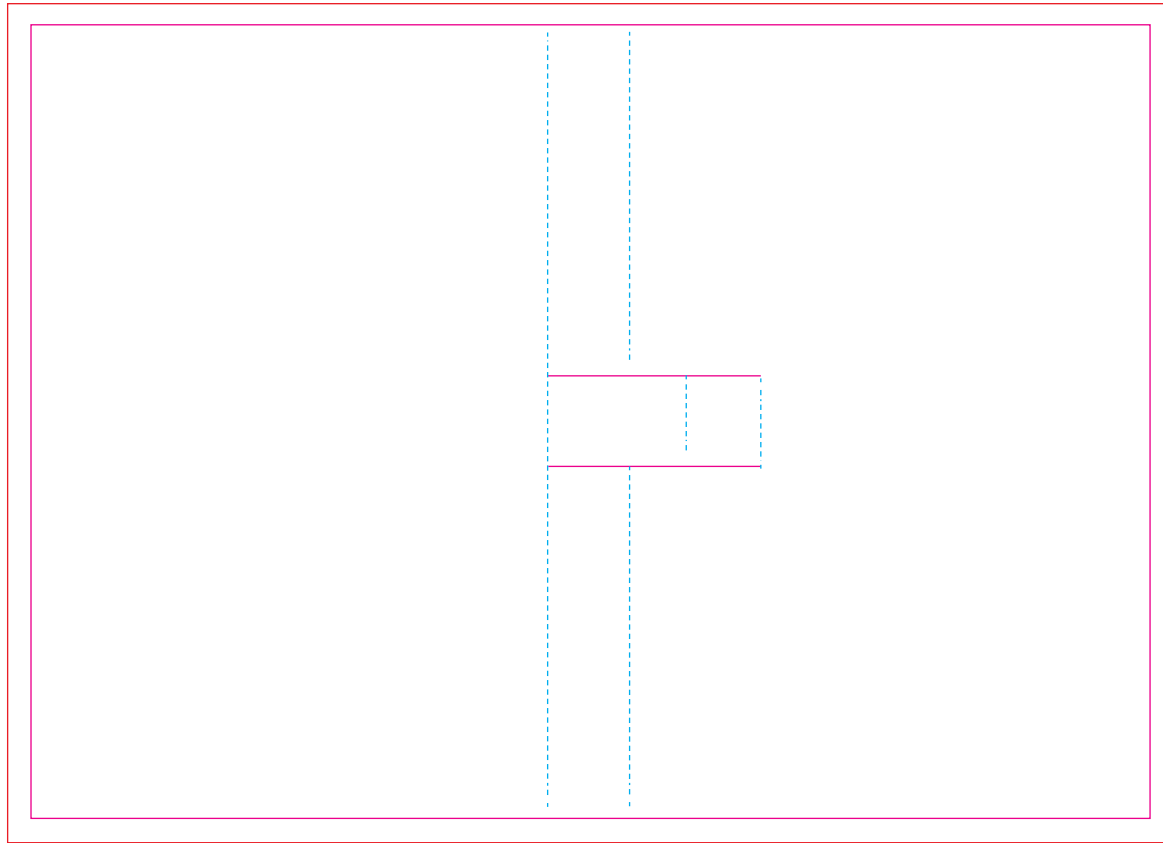


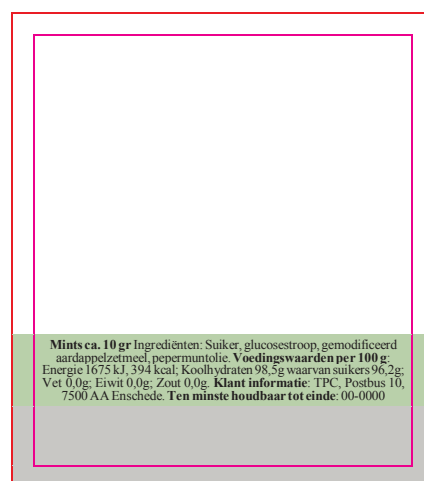
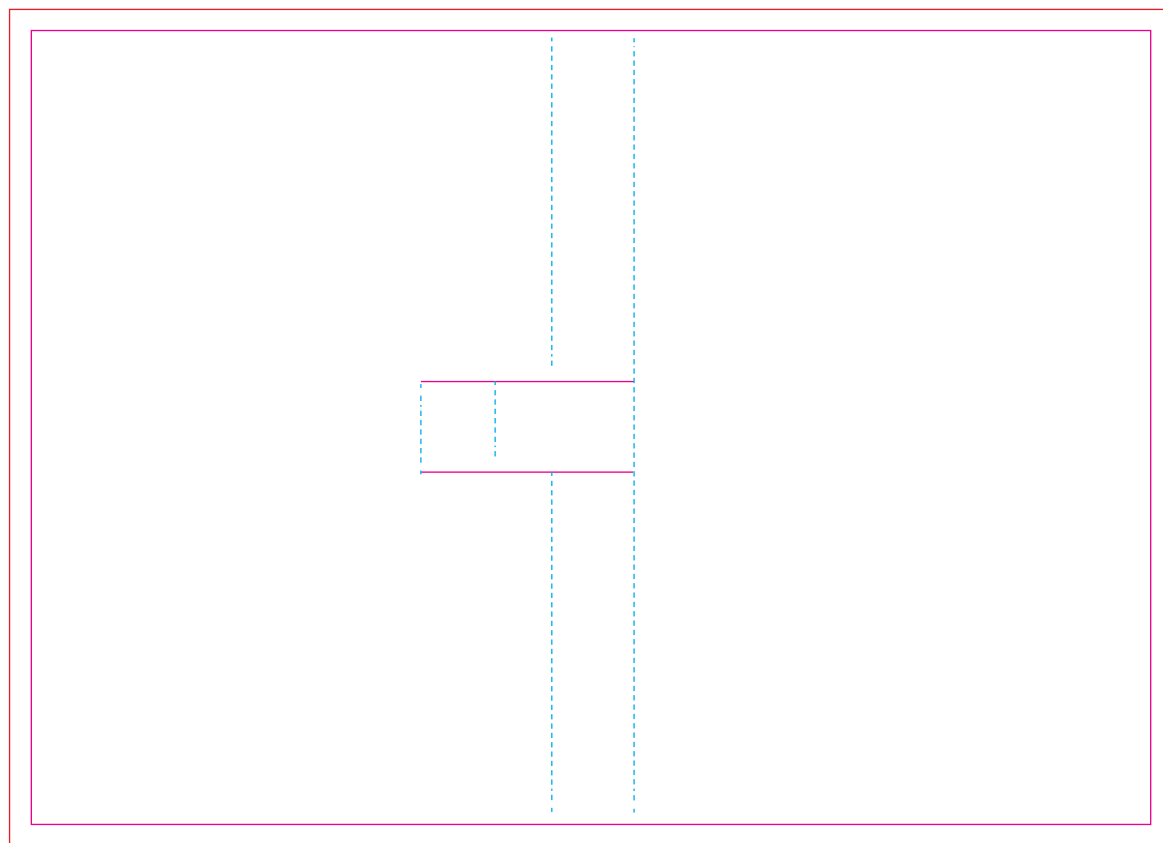
Drukformaat / Print size / Druckformat:
148 x 105 mm



INNER SLEEVE



OUTER SLEEVE



NL

Mints ca. 10 gr Ingrediënten: Suiker, glucosestroop, gemodificeerd aardappelzetmeel, pepermuntolie.
Voedingswaarden per 100 g: Energie 1675 kJ, 394 kcal; Koolhydraten 98,5g waarvan suikers 96,2g; Vet 0,0g; Eiwit 0,0g; Zout 0,0g. **Klant informatie:** TPC, Postbus 10, 7500 AA Enschede. **Ten minste houdbaar tot einde:** 00-0000

EN

Mints approx. 10 gr Ingredients: Sugar, glucose syrup, modified potato starch, peppermint oil. **Nutritional values per 100g:** Energy 1675 kJ, 394 kcal; Carbohydrates 98,5g of which sugars 96,2g; Fat 0,0g; Protein 0,0g; salt 0,0g. **Customer information:** TPC, PO Box 10, 7500 AA Enschede. **Best before end:** 00-0000

DU

Minze ca. 10 gr Zutaten: Zucker, Glukosesirup, modifizierte Kartoffelstärke, Pfefferminzöl. **Nährwerte pro 100 g:** Energie 1675 kJ, 394 kcal; Kohlenhydrate 98,5g davon Zucker 96,2g; Fett 0,0g; Protein 0,0g; Salz 0,0g. **Kundeninformation:** TPC, Postfach 10, 7500 AA Enschede. **Mindestens haltbar bis Ende:** 00-0000